



PROJECT	
ITEM #	
QUANTITY	DATE
APPROVAL	

**MF**

**Built-in remote milk or beverage dispensers**

**Short form specifications**

The exterior sides, bottom and top edge shall be 20-gauge galvanized steel. 14-gauge exterior bottom applies to self contained models only.

Inner liner shall be water tight and constructed of 22-gauge stainless steel with a 1.00" (2.54cm) I.P.S. drain. Opening(s) shall have throat liners constructed of high impact plastic. Unit to be insulated with foamed-in-place polyurethane insulation with a non-conductive breaker strip.

Each opening shall have an insulated, stainless steel folding lid with aluminum liner, molded rubber edge and black plastic handles.

Each self-leveling mechanism shall be field adjustable by adding or removing stainless steel extension springs in the elevator housing inside the unit. The elevators shall be connected by removable platform carriers constructed of 18-gauge stainless steel.

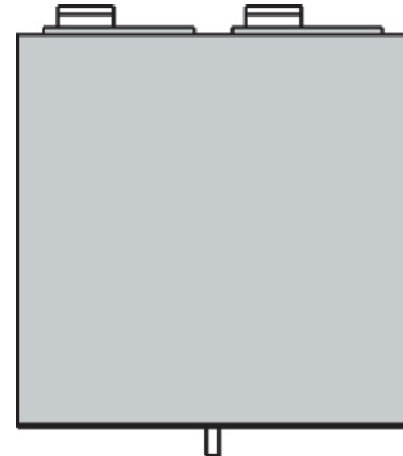
Refrigeration system (to provided by others) shall use HFC-134a refrigerant. An expansion valve and copper tubing connection to the remote refrigeration system shall be provided. NOTE: Temperature and pressure controls are not provided on remote models.

**THE FOLLOWING APPLIES TO MODELS MF-2821, MF-31, MF-44 AND MF-57 ONLY:**

(6) anodized aluminum divider trays will be supplied per opening. NOTE: See chart on back for milk storage capacity.

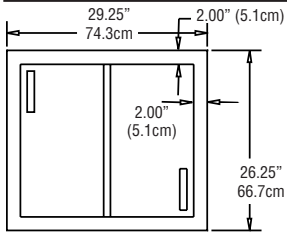
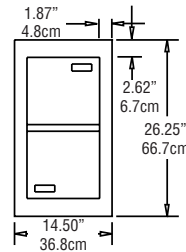
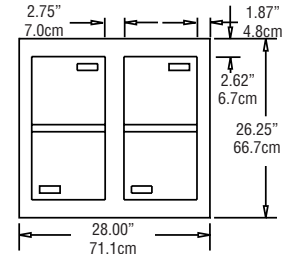
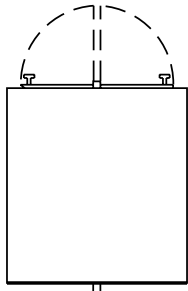
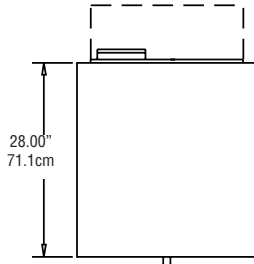
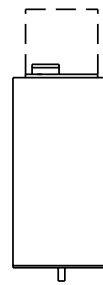
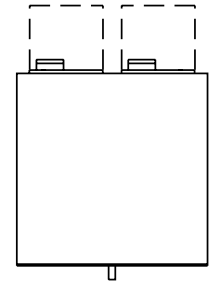
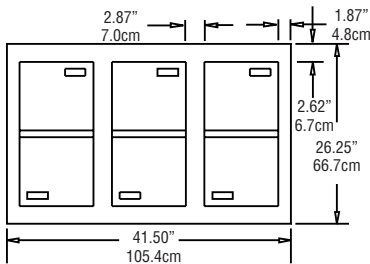
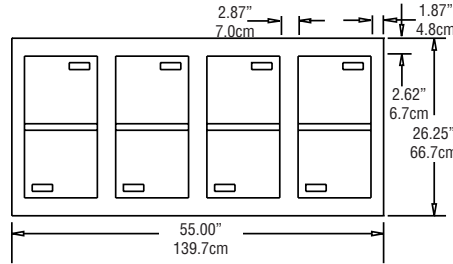
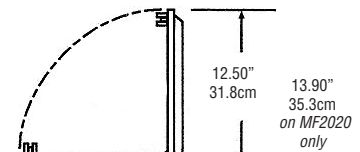
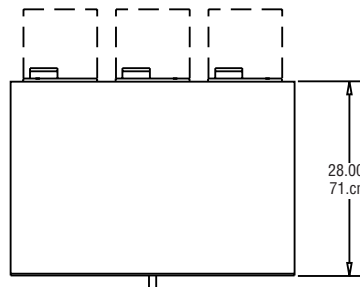
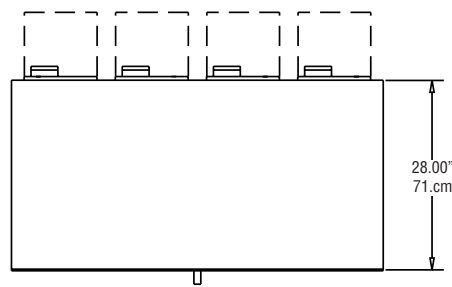
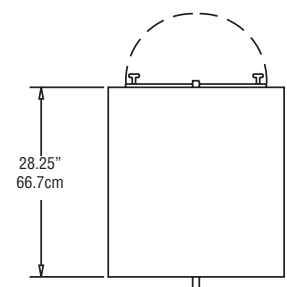
**Optional Accessories & Modifications**

- Lid locking device
- Wire baskets (not available on MF-2020)
- Lexan® covers
- Special refrigerants (contact factory)



**Model MF-31**

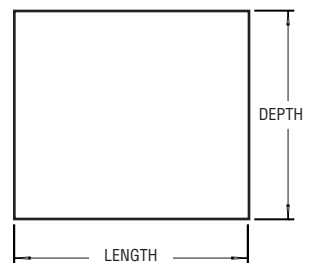


**Built-in remote milk or beverage dispensers**

**PLAN VIEW  
MODELS MF-2020**

**PLAN VIEW  
MODELS MF-2821**

**PLAN VIEW  
MODELS MF-31**

**ELEVATION VIEW  
MODELS MF-2020**

**RIGHT END VIEW  
MODEL MF-2020**

**ELEVATION VIEW  
MODELS MF-2821**

**ELEVATION VIEW  
MODELS MF-31**

**PLAN VIEW MODELS MF-44**

**PLAN VIEW MODELS MF-57**

**LID OPENING DETAIL  
MODELS MF-2821,  
MF-31, MF-44 & MF-57**

**ELEVATION VIEW MODELS MFSC-44**

**ELEVATION VIEW MODELS MFSC-57**

**RIGHT END VIEW  
MODELS MF-2821,  
MF-31, MF-44 & MF-57**

MODEL NUMBER	CUT OUT DIMENSIONS(LxD)	CAPACITY	HORSE POWER†	BTU LOAD	EVAP. TEMP.	SHIP WEIGHT
MF-2020	(1) 25.25" x 22.25" (1) 64.1cm x 56.5cm	n/a	1/4†	300	30°F -1°C	240lbs 109kg
MF-2821	(1) 10.75 x 21.00" (1) 27.3cm x 53.3cm	126 half pint cartons	1/4†	260	30°F -1°C	197lbs 89kg
MF-31	(2) 10.75 x 21.00"* (2) 27.3cm x 53.3cm*	252 half pint cartons	1/4†	300	30°F -1°C	238lbs 108kg
MF-44	(3) 10.75 x 21.00"* (3) 27.3cm x 53.3cm*	378 half pint cartons	1/4†	410	30°F -1°C	312lbs 142kg
MF-57	(4) 10.75 x 21.00"* (4) 27.3cm x 53.3cm*	504 half pint cartons	1/4†	520	29°F -2°C	335lbs 152kg

\*requires 2.75 (7.0cm) between each cutout

†MF models require remote refrigeration systems; horsepower rating shown are recommended


**CUTOUT ORIENTATION  
(PLAN VIEW)**